

Resolution 360™ Clip

Hemoclip

THE RESOLUTION CLIP PORTFOLIO

Resolution Clip is intended to be used for¹

- Hemostasis within the entire GI tract
 - > Prophylactic clipping
- Endoscopic marking
- Closure of GI tract luminal perforations
- Anchoring jejunal feeding tubes

FEATURES AND BENEFITS

Secure locking mechanism, designed to lock securely in place for improved retention²

MR Conditional according to ASTM F2503

Tactile feedback, allows the user to confirm hemostasis before deploying the clips

User friendly handle. Designed to provide tactile and audible (1st click, 2nd click) feedback upon closing of jaws, indicated that the clip is being deployed

RESOLUTION 360 CLIP builds on the strong clinical and economic track record established by Resolution™ Clip and offers new benefits to providers and patients including controlled clip placement and shorter procedure times

NEW ERGONOMIC HANDLE

Designed with same tactile and deployment feedback as Resolution™ Clip

ROTATION CONTROL KNOB

Allows for 1 to 1, nurse/technician controlled rotation

BRAIDED CATHETER

Allows for 1 to 1, physician controlled rotation at the biopsy cap on the scope

NO SHEATH

Allows for fewer setup steps

¹ See detailed information in the "Instructions for Use" supplied with the product.

Hemostasis Solutions

Boston Scientific

Boston Scientific is committed to improving patient care in the management of gastrointestinal bleeding.

Through innovation and continuous educational support, we offer a wide range of therapeutic options including injection therapy, thermal therapy, mechanical therapy and ligation.



RESOLUTION™ CLIP
PROPHYLACTIC CLIPPING TO REDUCE THE RISK OF DELAYED BLEEDING POST LESION RESECTION
NEW INDICATION

Boston Scientific

Advancing science for life™

www.bostonscientific.eu

Copyright © 2016 by Boston Scientific Corporation or its affiliates. All rights reserved.

DINEND2314ED

¹ See detailed information in the "Instructions for Use" supplied with the product.
² Re-opening and closing capability may be limited by clinical circumstances and patient anatomy, among other factors.
³ Jensen et al 2009, Gastrointestinal Endoscopy, Volume 70, No. 5: 969. The results of this canine study may not be representative of performance in humans.
⁴ Image courtesy of Dennis M. Jensen, MD, CURE DDRC, UCLA & VA Medical Centers, and David Geffen School of Medicine at UCLA.
All cited trademarks are the property of their respective owners. CAUTION: The law restricts these devices to sale by or on the order of a physician. Indications, contraindications, warnings and instructions for use can be found in the product labeling supplied with each device. ENDO-153329-AD ABR 2017. Printed in The Netherlands by DeBulsel / Creativeservices.

Resolution™ Clip

Hemoclip

The Resolution Clip has impacted more than 2.5 million patient lives

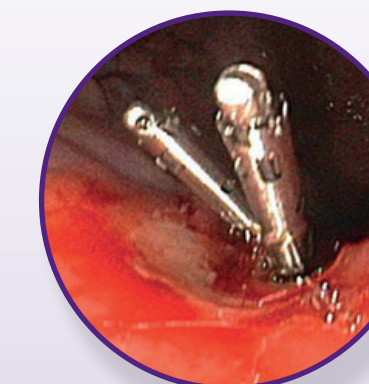
June 29, 2004:
First Resolution
Clip placed

2009:
More than 1,000,000
Resolution Clips placed

February 2013:
MR Conditional Claim
Commercially Launched

January 2016:
More than 7 million
Resolution Clips placed

February 2016
Prophylactic Clipping
Indication
Commercially Launched



Two Resolution Clips placed on Chronic Gastric Ulcer base⁴

11MM-WIDE JAW SPAN

Intended to grasp a sizeable amount of tissue



Stopper

OVER-SHEATH

OVER-SHEATH GRIP

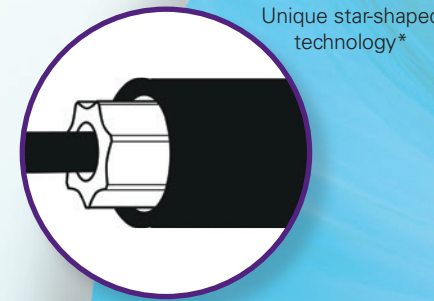
⁴ Image courtesy of Dennis M. Jensen, MD, CURE DDRC, UCLA & VA Medical Centers, and David Geffen School of Medicine at UCLA.

Interject Injection Therapy Needle Catheter™

Sclerotherapy Needles

TORTUOUS ANATOMY

Unique star-shaped inner catheter design* helps promote reliable needle actuation in tortuous anatomy (even after kinking)



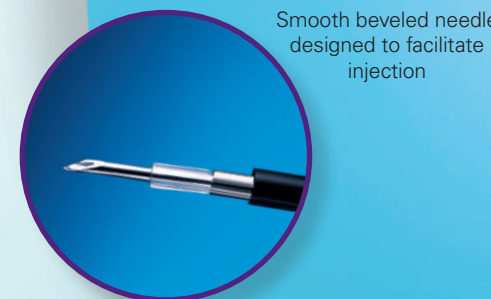
Unique star-shaped technology*

EFFICIENT ACCESS

Pushable sheath construction designed to facilitate advancement through difficult pathways to remote anatomy

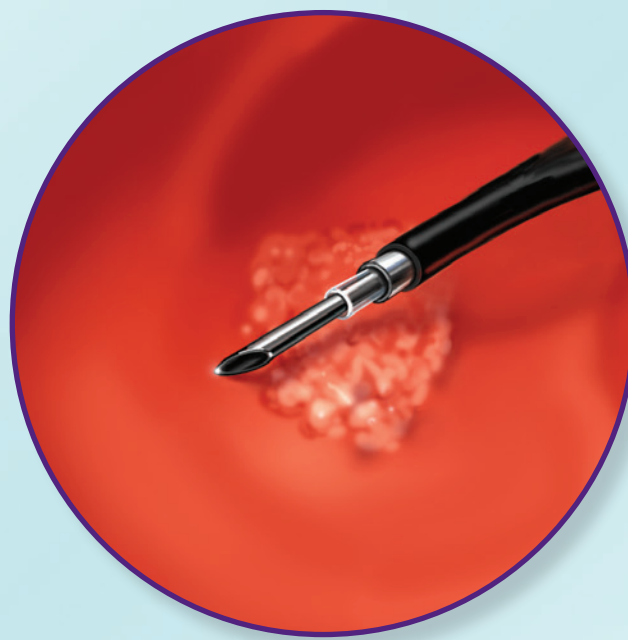
SMOOTH NEEDLE PENETRATION

Beveled needle designed to facilitate injection



Smooth beveled needle designed to facilitate injection

Convenient locking hub for procedural efficiency



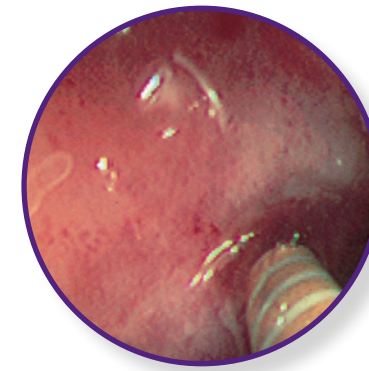
*Patent on file Boston Scientific Corp.

Injection Gold Probe™ & Gold Probe™

Bipolar Electrohemostasis Catheters

PROPRIETARY DISTAL TIP DESIGN

- Rounded Gold distal tip is designed to provide excellent conductivity, uniform burn, and effective coagulation in various tip positions
- Precision spacing of electrode pairs helps control coagulation depth



A 10F (3.3 mm) Injection Gold Probe Catheter is used to inject a vasoconstrictor around the vessel.

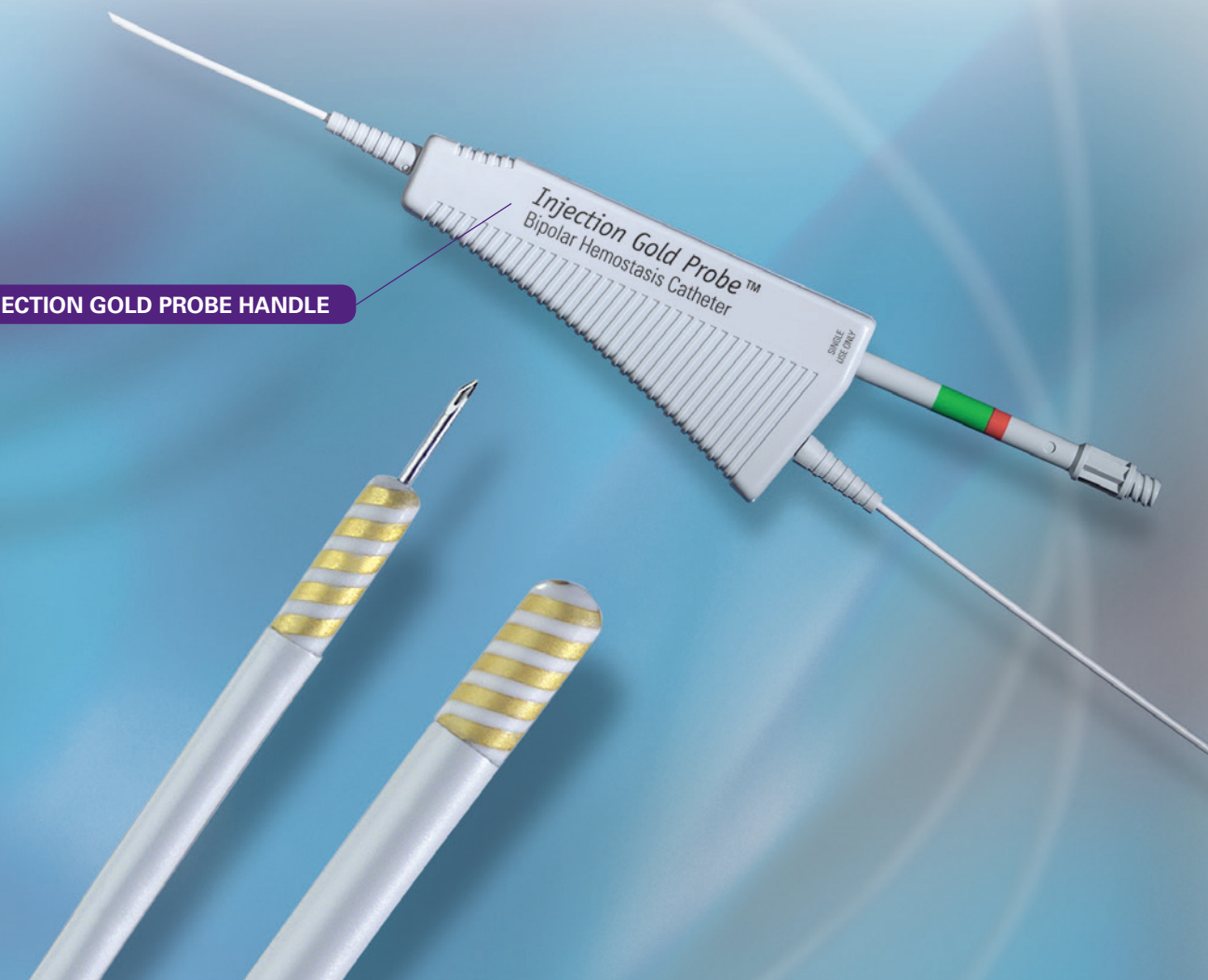
FIRM CATHETER SHAFT FOR TAMPONADE

- Designed to reduce kinking, facilitating advancement and helping to provide better *en face* and tangential tamponade
- Hemoglide coating helps reduce surface friction to facilitate passage through the endoscope

UNIQUE INTEGRATED INJECTION AND THERMAL HEMOSTASIS CAPABILITIES

- Designed to help reduce catheter exchanges and procedural time
- Engineered for smooth, consistent needle extension, even in difficult endoscope positions
- Integrated irrigation facilitating manual or mechanical irrigation for visibility

INJECTION GOLD PROBE HANDLE



Speedband™ Superview™ Super 7™

Multiple Band Ligator



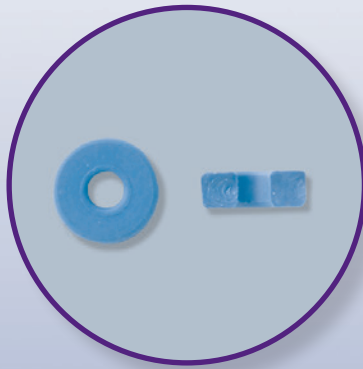
ERGONOMIC HANDLE WITH PRE-LOADED WIRE AND SCOPE FASTENER

- Handle attachment engineered to offer operator comfort
- Audible click, tactile and visual stop to confirm band deployment



CLEAR LIGATING UNIT WITH REAR-MOUNTED BANDS

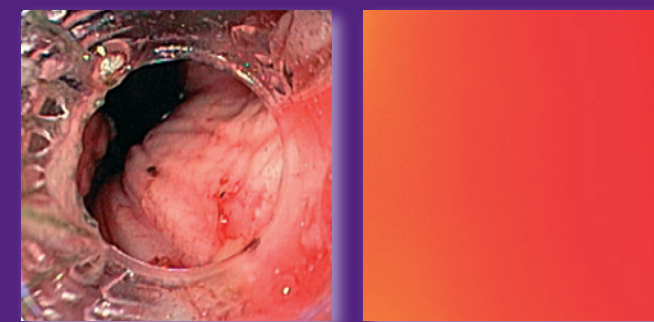
- Provides visibility for rapid navigation and pathology identification
- Single string deployment allows suction for tissue capture, band placement and band retention
- Alert Band offers a visual clue that only one band remains



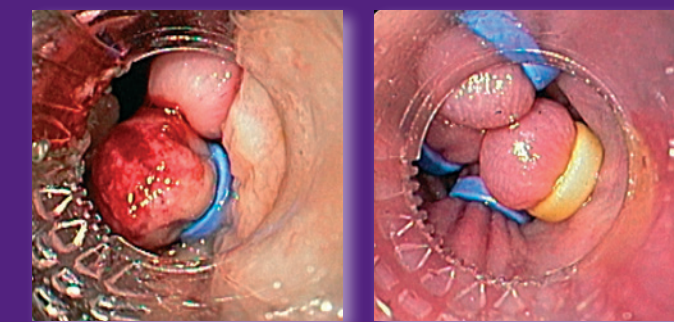
SQUARE MOULDED BANDS

- Ensure consistent shape and reliable performance
- Latex-free material designed to reduce the risk of allergic reactions

Visibility and Suction



Single and Multiple Variceal Band Ligation



Endoscopic images above courtesy of Prof. Dr. J. Hochberger, University of Erlangen

Ordering Information

Resolution™ Clip

Order Number	Working Length (cm)	Minimum Working Channel (mm)	Clip Opening (mm)	Units
M00522600	155	2.8	11	Box 1
M00522601	155	2.8	11	Box 10
M00522602	155	2.8	11	Box 20
M00522610	235	2.8	11	Box 1
M00522611	235	2.8	11	Box 10
M00522612	235	2.8	11	Box 20

Resolution 360™ Clip

Order Number	Working Length (cm)	Minimum Working Channel (mm)	Clip Opening (mm)	Units
M00521240	155	2.8	11	Box 1
M00521241	155	2.8	11	Box 10
M00521242	155	2.8	11	Box 20
M00521243*	155	2.8	11	Box 40
M00521230	235	2.8	11	Box 1
M00521231	235	2.8	11	Box 10
M00521232	235	2.8	11	Box 20
M00521233*	235	2.8	11	Box 40

*Coming soon

Injection Gold Probe™

Order Number	O.D. (F/mm)	Needle Gauge	Minimum Working Channel (mm)	Working Length (cm)	Connector	Units
M00560150	7/2.3	25	2.8	210	Standard	Box 1
M00560160	10/3.3	25	3.7	210	Standard	Box 1

Gold Probe™

Order Number	O.D. (F/mm)	Minimum Working Channel (mm)	Working Length (cm)	Connector	Units
M00560070	7/2.3	2.8	300	Standard	Box 1
M00560071	7/2.3	2.8	300	Standard	Box 5
M00560100	10/3.3	3.7	300	Standard	Box 1
M00560101	10/3.3	3.7	300	Standard	Box 5
M00560220	7/2.3	2.8	350	Standard	Box 1

Interject Injection Therapy Needle Catheter™

Order Number	Sheath Design	Sheath O.D. (mm)	Gauge	Needle O.D. (mm)	I.D. (mm)	Maximum Needle Extension Length (mm)	Working Length (cm)	Units
M00518151	Contrast	1.8	23	0.64	0.32	4	200	Box 5
M00518161	Contrast	1.8	25	0.51	0.24	4	200	Box 5
M00518251	Contrast	1.8	23	0.64	0.32	6	200	Box 5
M00518261	Contrast	1.8	25	0.51	0.24	6	200	Box 5
M00518351	Contrast	2.3	23	0.64	0.32	4	240	Box 5
M00518361	Contrast	2.3	25	0.51	0.24	4	240	Box 5
M00518111	Clear	1.8	25	0.51	0.24	4	200	Box 5
M00518301	Clear	2.3	23	0.64	0.32	4	240	Box 5
M00518311	Clear	2.3	25	0.51	0.24	4	240	Box 5

Speedband™ Superview™ Super 7™

Order Number	Minimum Working Channel (mm)	Scope O.D. (mm)	Bands/Ligating Unit	Units
M00542250	2.8	8.6-11.5	7	Box 1
M00542251	2.8	8.6-11.5	7	Box 2
M00542253	2.8	8.6-11.5	7	Box 4

Irrigation catheter supplied in each kit

For single use only. Do not reuse.